

**APPENDIX B**

## Scoudouc River



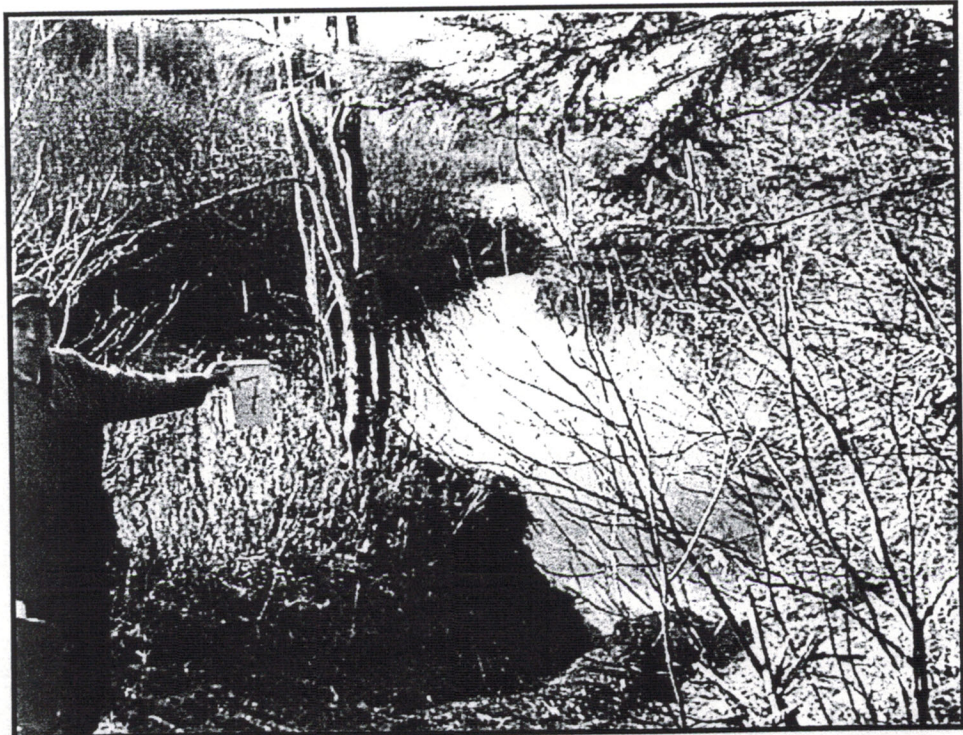
**Figure 1.** Plastic storm drainage pipe (with metal lid) originating from house at site 3.



**Figure 2.** Serious erosion problems near culvert crossing dirt road at site 5.



**Figure 3.** Small erosion ditch originating from abandoned pit at site 6.



**Figure 4.** An all-terrain vehicle crossing the Scoudouc river at site 7.



**Figure 5.** An all-terrain vehicle crossing the Scoudouc river at site 8.



**Figure 6.** Cattle access to river at site 9.



**Figure 7.** Metal storm drainage pipe originating from tourist center at site 10.



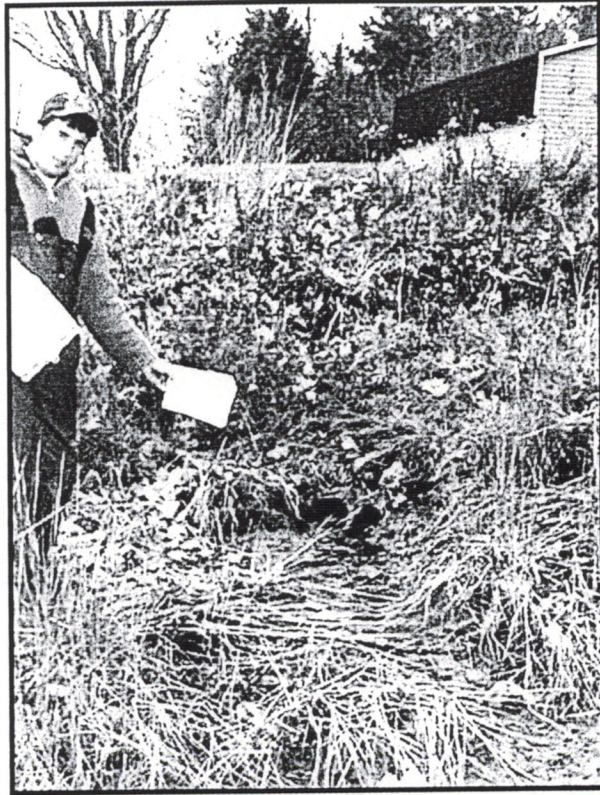
**Figure 8.** Plastic drainage pipe originating from trailer camp ground at site 11.



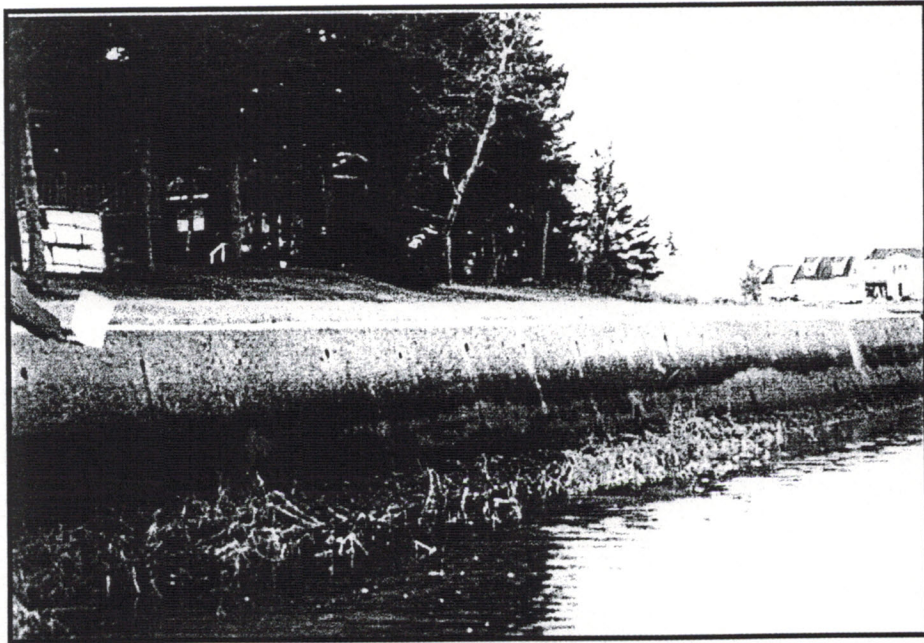
**Figure 9.** Plastic pipe originating from white house at site 12.



**Figure 10.** Plastic pipe originating from grey house at site 13.



**Figure 11.** Metal culvert originating from white house at site 13.



**Figure 12.** Concrete bank stabilizer at site 15. Small drainage pipes are built-in the concrete at every 6-8 feet.



**Figure 13.** Plastic drainage pipe originating from blue house at site 17.

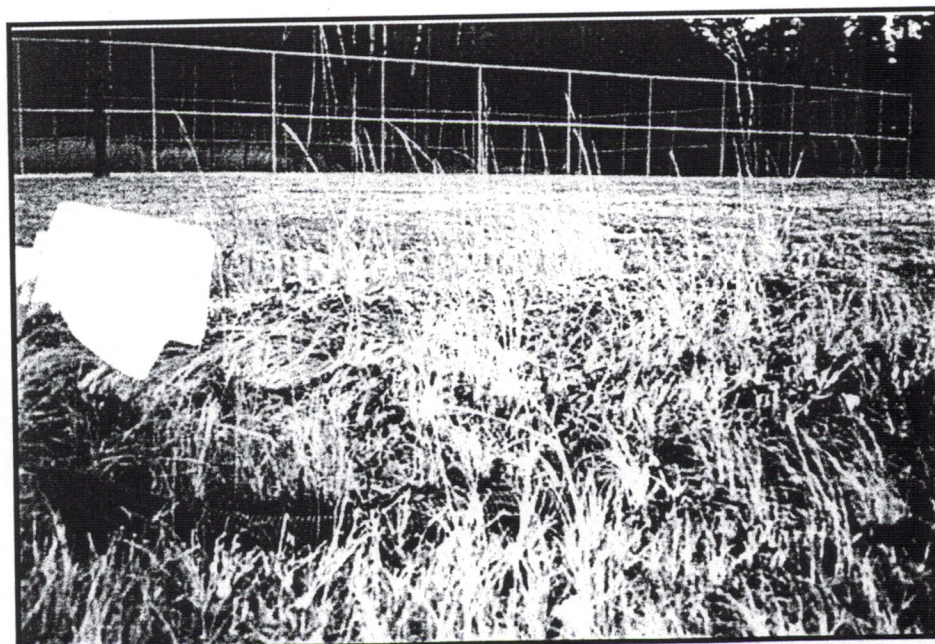


**Figure 14.** Plastic drainage pipe originating from white house at site 18.





**Figure 15.** Plastic culvert in road at site 19.



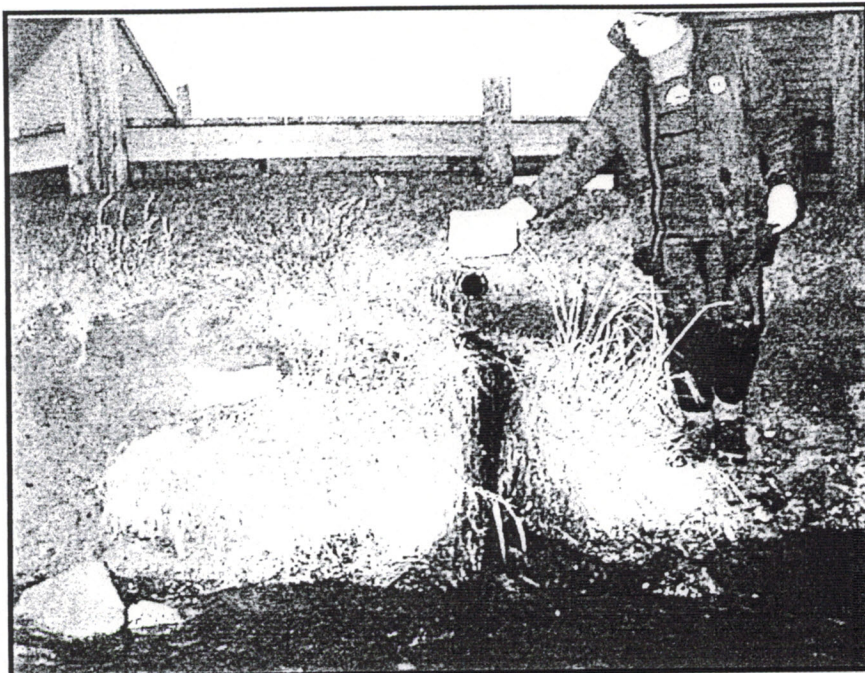
**Figure 16.** Plastic storm drainage pipe originating from white house at site 20.



**Figure 17.** Small plastic pipe originating from Shediac Lobster Shop at site 22. .



**Figure 18.** Large plastic pipe originating from Shediac Lobster Shop at site 22. Lobster waste flowing from pipe.



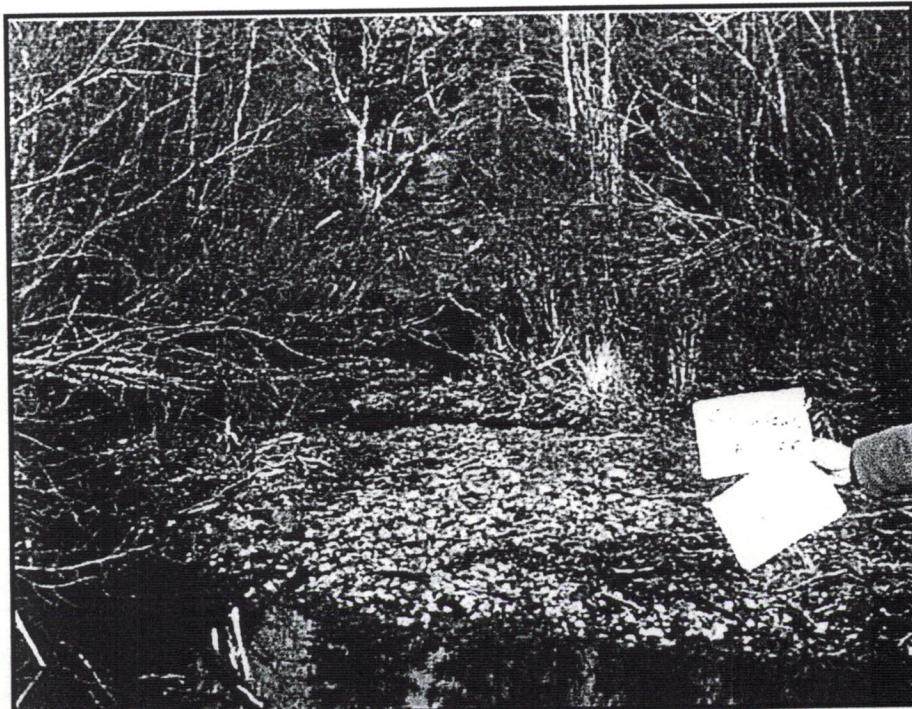
**Figure 19.** Plastic pipe originating from behind tourist center in Shediac (site 23).



**Figure 20.** Erosion ditch along a slightly sloped bank at site 25.



**Figure 21.** Erosion ditch along right side of Scoudouc river that is probably caused by power lines trail (site 26).



**Figure 22.** Moderate erosion caused by access road at site 28.



**Figure 23.** Rusting culvert pipe (abandoned) lying across a portion of the river at site 28.

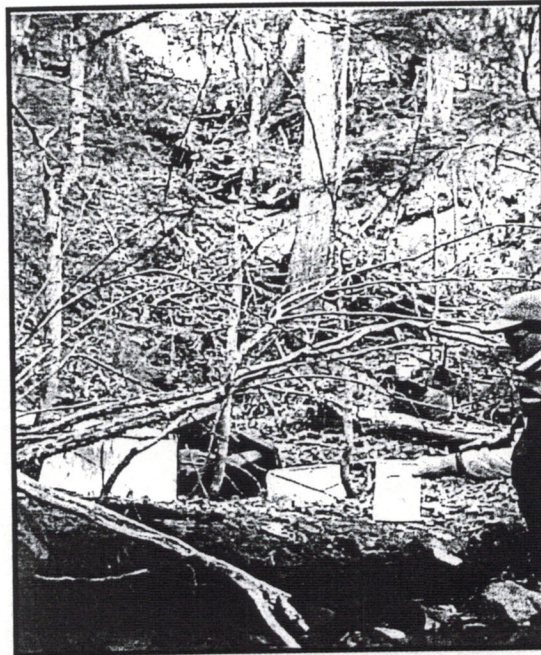
## Shediac River



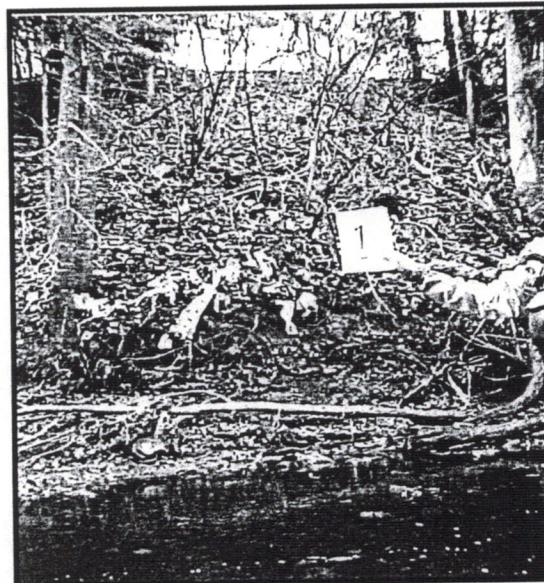
**Figure 1.** Minor erosion originating from lawn of nearby house at site 1.



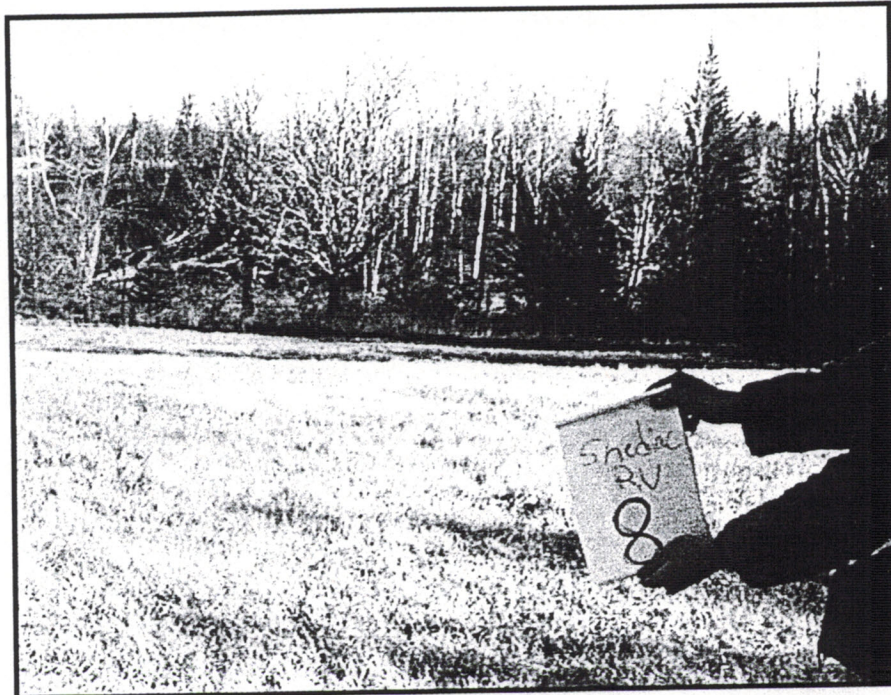
**Figure 2.** Serious erosion caused by cattle near farm in Irishtown (site 3).



**Figure 3.** Piles of garbage including fridges, car parts, metals segments and tires were situated on the left side of the watercourse at site 5.



**Figure 4.** Presence of garbage on the right side of the stream at site 7. Included are metal segments, plastics and glass. Another pile of garbage is located 100 meters downstream, on the right side of the watercourse.



**Figure 5.** Hayfield located 5-10 meters from stream at site 8. No erosion problems observed.



**Figure 6.** Plastic drainage pipe originating from a house at site 9.





**Figure 7.** A car junk yard located 15 meters from stream at site 10.



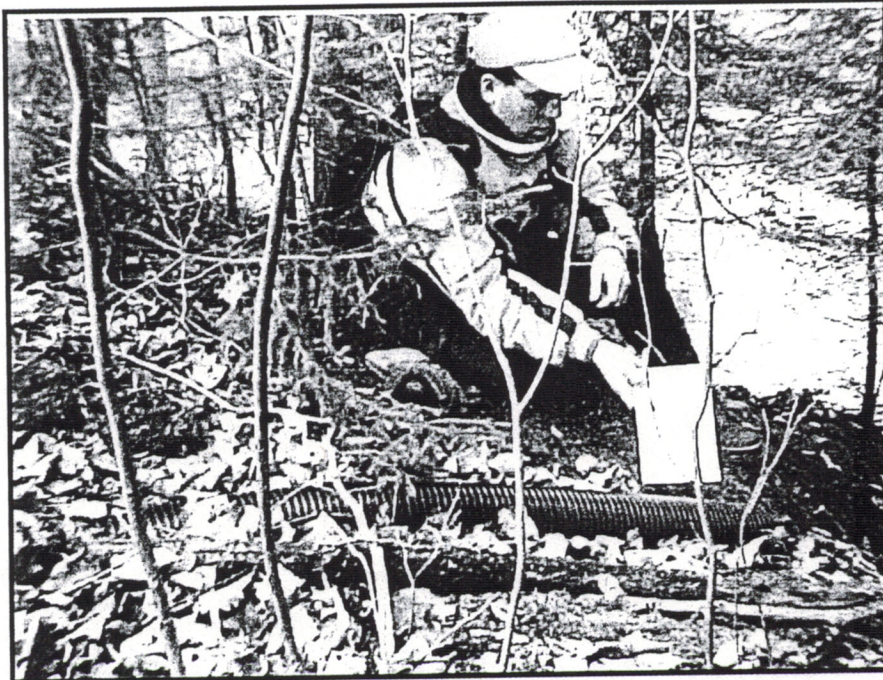
**Figure 8.** Plastic pipe originating from 2 houses at site 11. Beside this pipe exists a small quantity of garbage on the bank. Included in this garbage are metals, plastic s and glass.



Figure 9. Small plastic pipe originating from two houses at site 11.



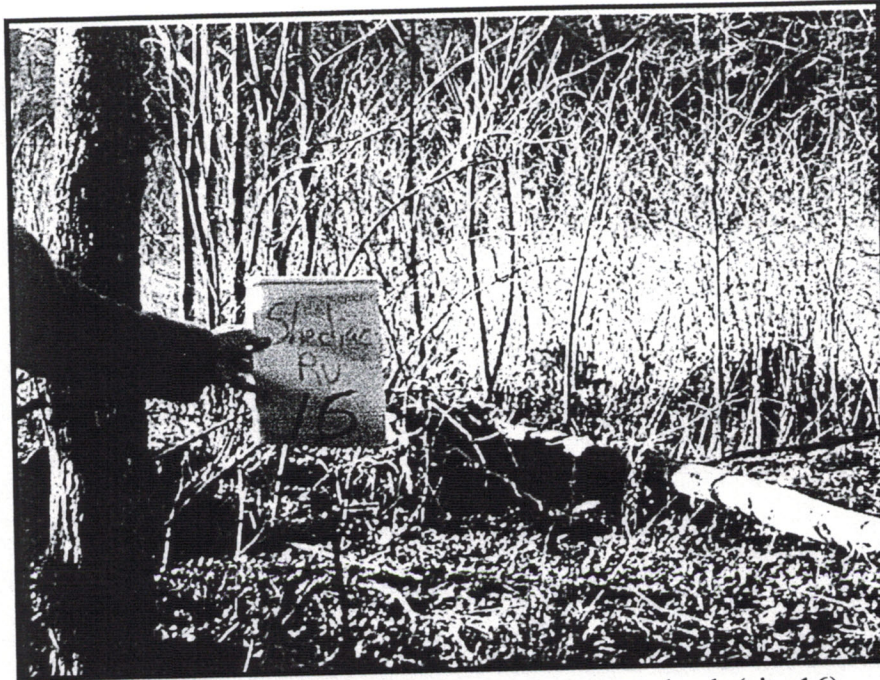
Figure 10. Small plastic pipe originating from three houses at site 12.



**Figure 11.** Plastic pipe originating from nearby house at site 14.



**Figure 12.** Fenced off cattle farm approximately 12 m from the watercourse at site 15.



**Figure 13.** A clearcut at 10-15 m from the stream bank (site 16).  
No erosion observed.



**Figure 14.** Plastic pipe originating from an abandoned field at site 17.



**Figure 15.** Pipeline construction at site 17.1 is leaving portion of land with no vegetation.



**Figure 16.** A farm field located 5-10 m from river at site 18.



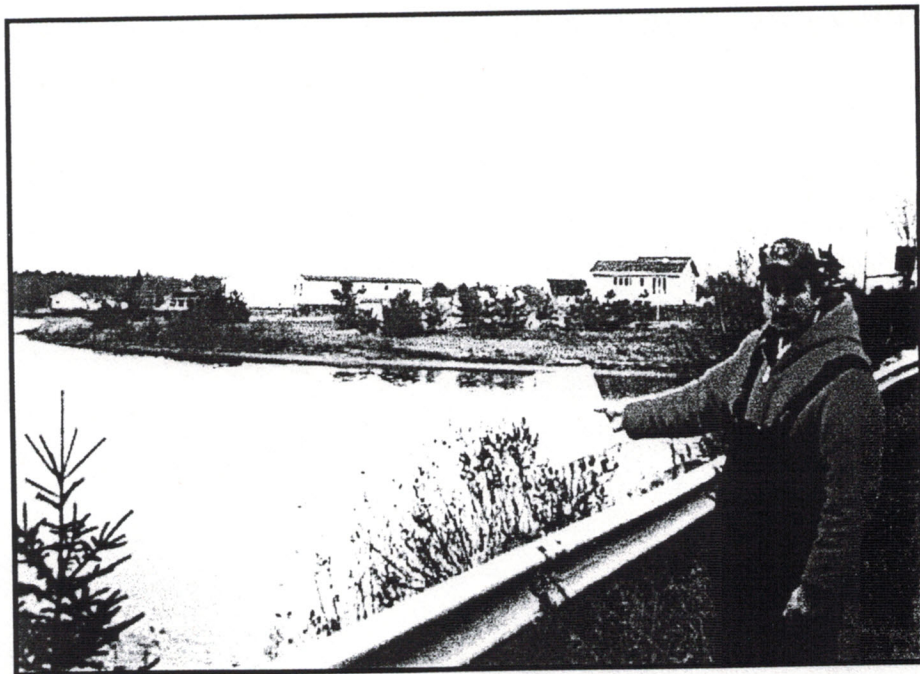
**Figure 17.** Cattle field fenced off at 3 meters from the watercourse at site 23. A small erosion ditch is flowing into river.



**Figure 18.** Two plastic pipes originating from a brown cottage at site 26.



**Figure 19.** Several houses litter the bank of the Shediac river at site 27.



**Figure 20.** A stretch of houses and cottages close to the bank of the river at site 31.

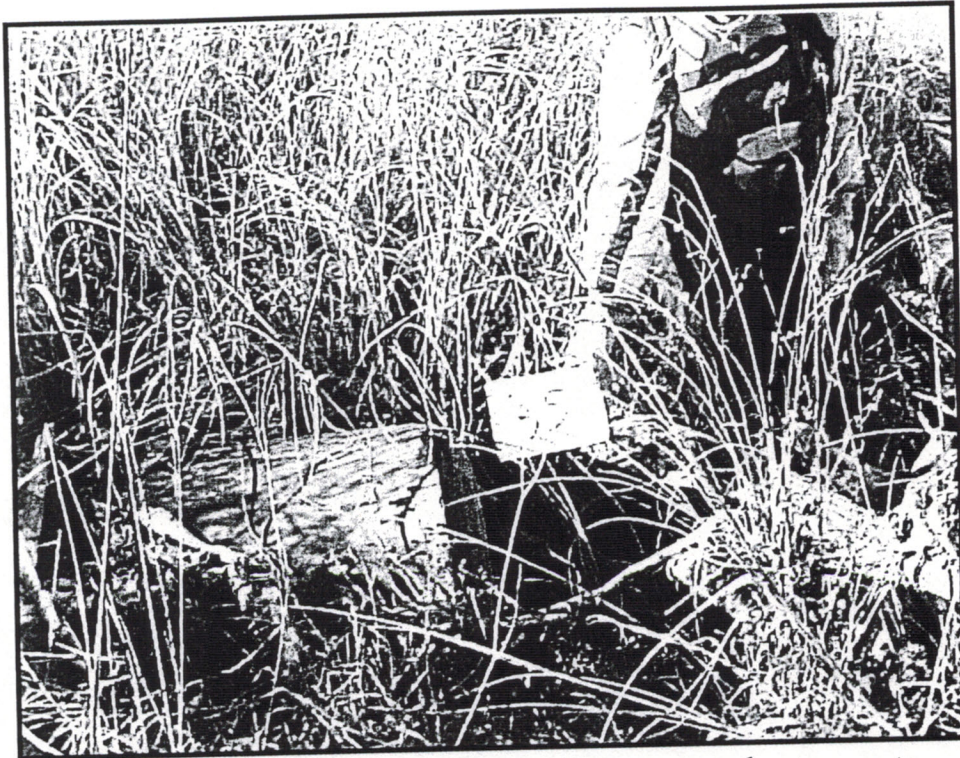


**Figure 21.** Several more houses and cottages close to the bank of the river at site 33.



**Figure 22.** A wharf stretching 30 meters alongside the river at site 34.





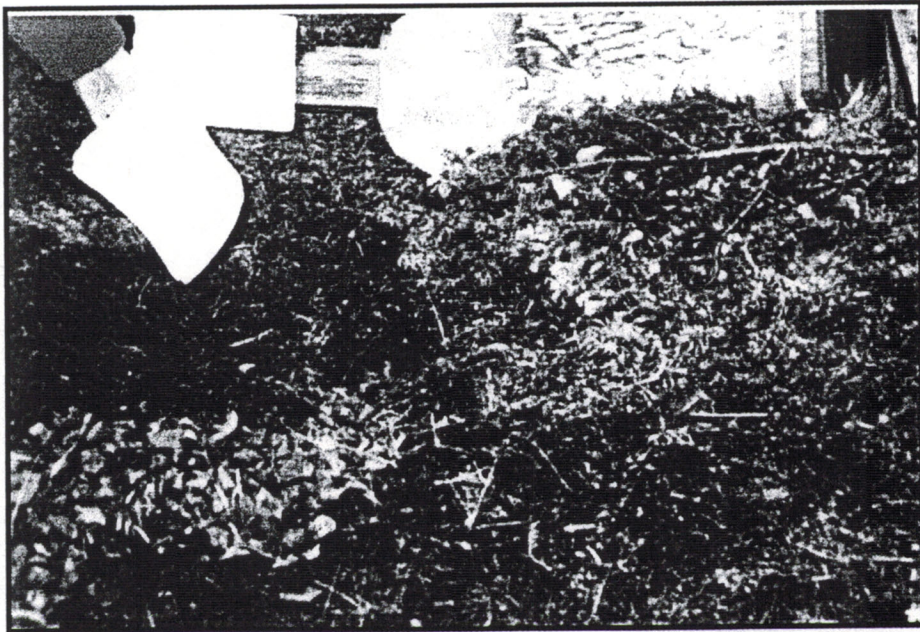
**Figure 23.** Bank stabilized with large boulders near a culvert on route 134 (site 35).



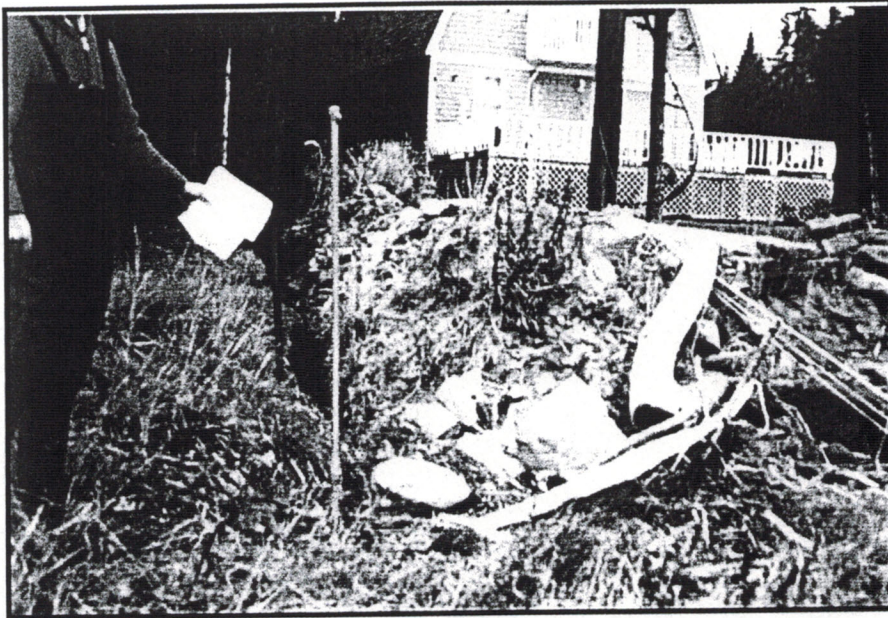
**Figure 24.** Houses and cottages litter the river bank (on the opposite side) at site 36. Banks are stabilized with cement blocks, rocks and wood for a distance of 100 m.



**Figure 25.** Small erosion ditches caused by bulldozing activities at site 39.



**Figure 26.** Small plastic pipe originating from red cottage at site 42. A portion of the pipe is covered with dirt.



**Figure 27.** A man-made drainage structure in back of a house at site 43. Some erosion was observed.



**Figure 28.** A cement culvert originating from a house's driveway ditch at site 44.



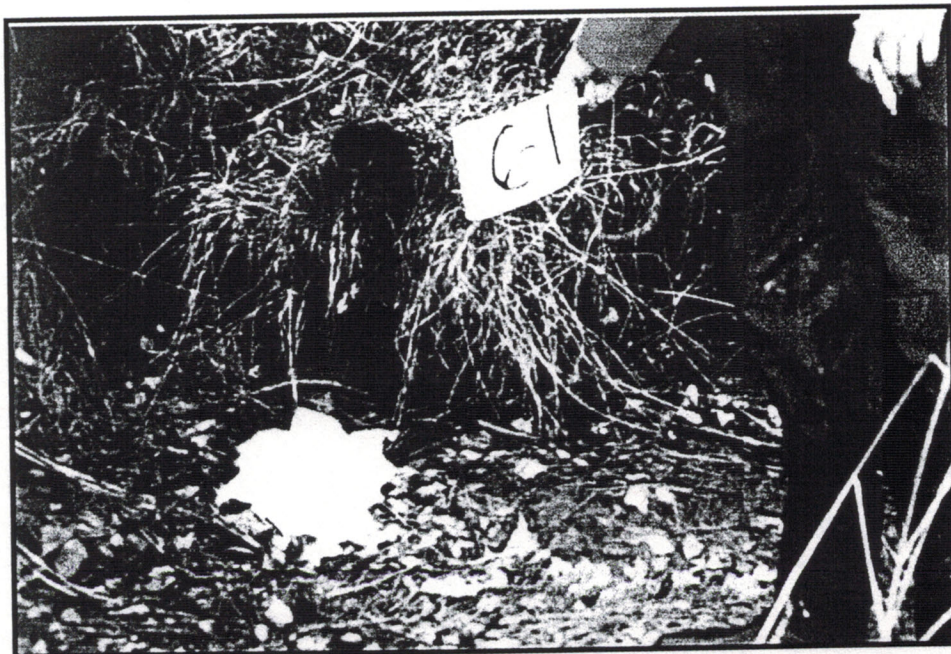
**Figure 29.** Serious sediment loading caused by a series of drainage ditches from a nearby farm at site 45.



**Figure 30.** Small plastic pipe originating from a beige house at site 46. Water was flowing from pipe.



**Figure 31.** Serious sediment loading caused by a ditch leading from a nearby house at site 50.



**Figure 32.** Soapy water observed flowing from a small plastic drainage pipe at site 61. The pipe originates from a nearby house.



**Figure 33.** Two small plastic drainage pipes originating from behind a house at site 63. A pool is also located behind the house.

## Batesman Brook



**Figure 1.** Dead hog carcasses litter the bank of Batesman brook at site 3.



**Figure 2.** Hog and cattle farm approximately 125 meters from Batesman brook at site 3.



**Figure 3.** Erosion ditch near cattle and hog farm at site 3 on Batesman brook.



## Wayne Road Brook



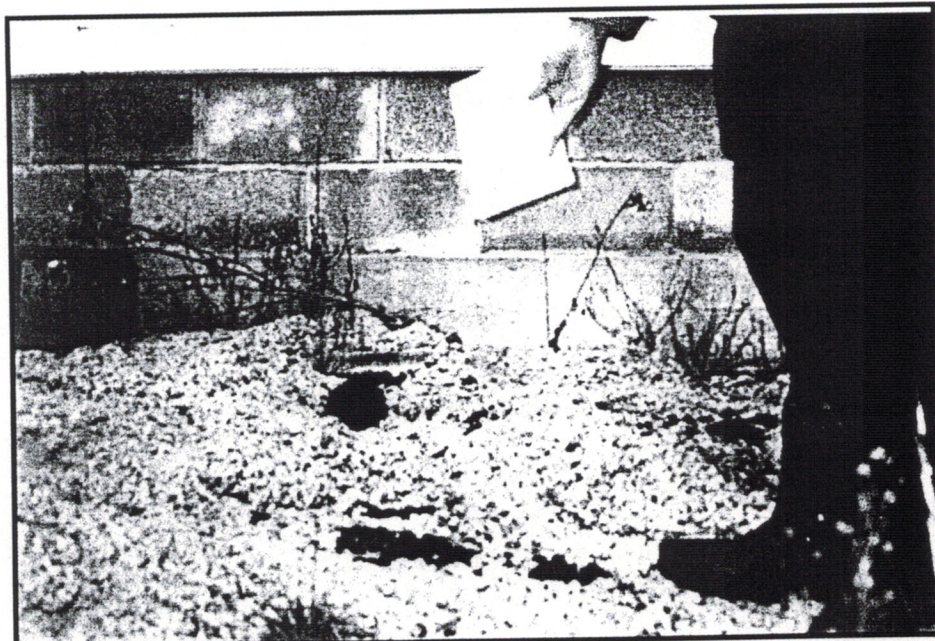
**Figure 1.** Two plastic drainage pipes originating from a house at site 1.



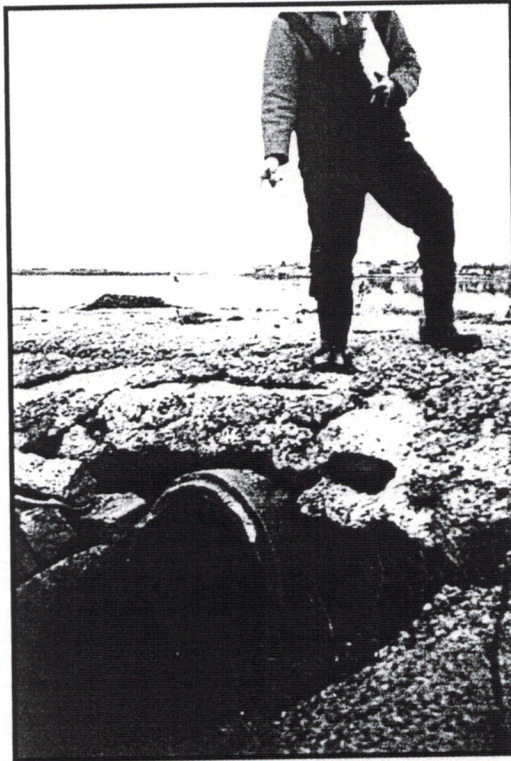
**Figure 2.** Concrete wall in front of house at site 2. There is approximately 30 meters of vegetation between the wall and the brook.



**Figure 3.** Cement culvert originating from Ditch Road at site 3.



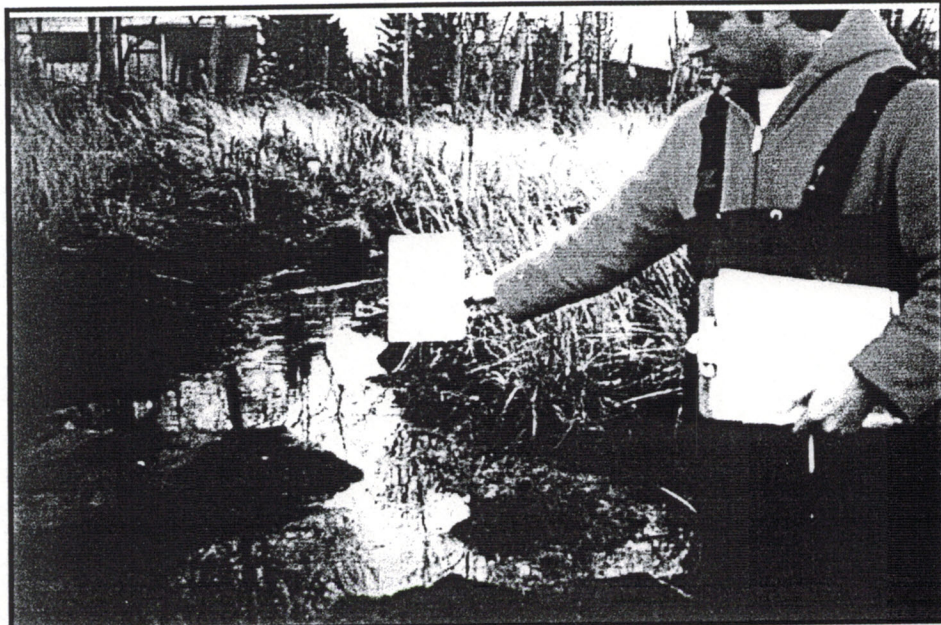
**Figure 4.** Plastic pipe originating from house at site 4.



**Figure 5.** Cement culvert crossing Wayne's brook at site 5.



**Figure 6.** Metal storm drainage pipe originating from brick building at site 6.

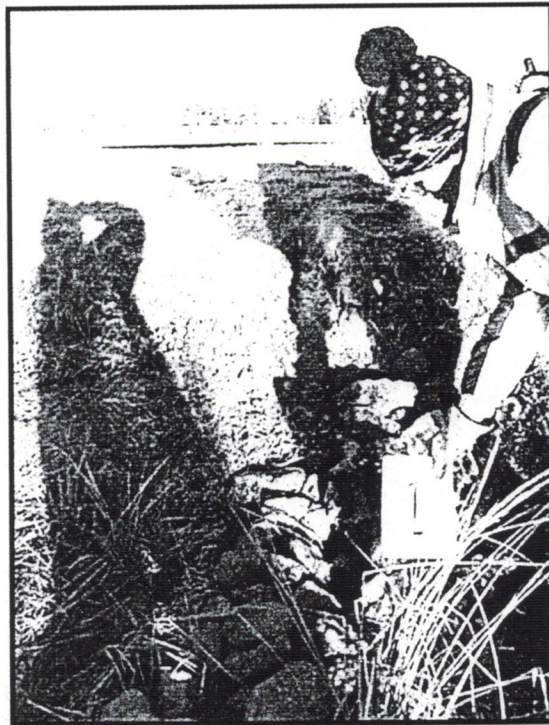


**Figure 7.** Small stream flowing to Shediac Bay.

## Albert Gallant Brook



**Figure 1.** A stretch of cottages near the brook at the beginning of site 1.



**Figure 2.** Plastic pipe running underneath rocks at the end of site 1.



**Figure 3.** Plastic drainage pipe near house at site 3. Water is flowing into a ditch that leads to brook.



**Figure 4.** Cement culvert at site 4, which may be a source of sediment and runoff.



**Figure 5.** Plastic drainage pipe leading into a ditch that flows into the brook (site 5).